

**POSTED AT PARISH COMPLEX BY JUNE 29, 2021**

**AGENDA OF THE ST. TAMMANY PARISH COUNCIL SPECIAL MEETING**

**WEDNESDAY, JUNE 30, 2021 AT 4:00 P.M.**

**ST. TAMMANY GOVERNMENT COMPLEX**

**21490 KOOP DRIVE, MANDEVILLE, LA.**

**Call to Order by Honorable Michael R. Lorino, Jr., Chairman**

**Pledge of Allegiance by**

**Invocation by**

**Roll Call: Marty Dean  
David Fitzgerald  
Martha Jenkins Cazaubon  
Michael R. Lorino, Jr.  
Rykert O. Toledano, Jr.  
Cheryl Tanner  
James "Jimmie" Davis, III  
Christopher Canulette  
Michael "Mike" Maxwell Smith  
Maureen "MO" O'Brien  
Steve Stefancik  
Jerry Binder  
Jacob "Jake" Airey  
Thomas "T.J." Smith, Jr.**

**PUBLIC COMMENT: a three (3) minute time limit is established for each member of the public wishing to speak (for or against) an item on the Agenda, except Appeals.**

**To ensure that all speakers are heard please hold cheers and applause. Anyone who wishes to place a comment in the record but who does not wish to speak at the podium may fill out a speaker card and check the box indicating they do not wish to speak.**

**1. Emergency Ordinance to amend to St. Tammany Parish Code of Ordinances, Section 2-39 Precinct Descriptions, and to Amend Ordinance Council Series No. 19-4200, "Ordinance to create prospective precincts, change the configuration, boundaries, or designations of its election precincts in accordance with Louisiana Revised Statutes 18:532 and 18:532.1"; and to provide a polling booth location pursuant to Louisiana Revised Statute 18:533; and to amend St. Tammany Parish Code of Ordinances Section 2-41 to apportion certain precincts to the correct council district.**

**2. Ordinance Cal. No. 6729 - Ordinance to amend to St. Tammany Parish Code of Ordinances, Section 2-39 Precinct Descriptions, and to Amend Ordinance Council Series No. 19-4200, "Ordinance to create prospective precincts, change the configuration, boundaries, or designations of its election precincts in accordance with Louisiana Revised Statutes 18:532 and 18:532.1"; and to provide a polling booth location pursuant to Louisiana Revised Statute 18:533; and to amend St. Tammany Parish Code of Ordinances Section 2-41 to apportion certain precincts to the correct council district.**

**(Public hearing: July 8, 2021)**

**ADJOURN**



THE PARISH OF ST. TAMMANY HEREBY ORDAINS BY EMERGENCY DECREE: that it amends Ordinance Council Series No. 19-4200 by replacing specific written precinct descriptions as designated in Ordinance Council Series No. 19-4200 with the following specific written precinct descriptions, which changes no boundaries, and that the following precincts be amended in the St. Tammany Parish Code of Ordinances Section 2-39 Precinct Descriptions:

**Amend Ordinance Council Series No. 19-4200, to provide for more accurate written descriptions of various precinct boundaries to conform to the maps attached as exhibits to Ordinance Council Series No. 19-4200:**

*Precinct M09.* Commence at the intersection of Florida Street (a.k.a. Highway 190) and Atalin Street, also the point of beginning; thence follow Atalin Street south to its intersection with Bayou Castine; thence follow the meanderings of Bayou Castine northeast to its intersection with a drainage canal; thence follow the drainage canal north and northwest to its intersection with Austerlitz St.; thence follow Austerlitz St. northwest to its intersection with Soult St.; thence follow Soult St. southwest to its intersection of Florida Street (a.k.a. Highway 190); thence follow Florida Street (a.k.a. Highway 190) northwest to its intersection with Atalin Street, also the point of beginning.<sup>1</sup>

*Precinct 704.* Commence at the intersection of Highway 190 and Bayou Lacombe, also the point of beginning; thence follow the meanderings of Bayou Lacombe southeast and south to its intersection where Bayou Lacombe flows into Lake Pontchartrain; thence follow the shore line of Lake Pontchartrain east and southeast to its intersection with a pipeline leading into Lake Pontchartrain; thence follow the pipeline northeast to its intersection with Bayou Paquet Road; thence follow Bayou Paquet Road east and southeast to its intersection with Transmitter Road; thence follow Transmitter Road north to its intersection with Highway 190; thence follow Highway 190 west, northwest, and southwest to its intersection with Bayou Lacombe, also the point of beginning.

*Precinct 912.* Commence at the intersection of Bayou Bonfouca and Bayou Liberty Road, also the point of beginning; thence follow Bayou Liberty Road northwest, west, and southwest to its intersection with Napoleon Avenue; thence follow Napoleon Avenue southeast to its intersection with Benjamin Road; thence follow Benjamin Road southwest and southeast to its intersection with Laurent Road; thence follow Laurent Road southwest, northwest, and southwest to its intersection with Baldwin Drive; thence follow Baldwin Drive southeast to its intersection with Ridgewood Drive; thence follow Ridgewood Drive southwest to its intersection with Dunbar Drive; thence follow Dunbar Drive southeast to its intersection with a gravel driveway into the property address of 57233 Dunbar Rd; thence follow the gravel driveway continuing southeast, then east, southeast, and south to its intersection with a cleared path leading to a boat launch on the property leading into Bayou Bonfouca; thence follow the cleared path southeast and southwest to its intersection with a boat launch leading into Bayou Bonfouca; thence follow the boat launch south to its intersection with Bayou Bonfouca; thence follow Bayou Bonfouca east, northeast, north, northeast, southeast, and northeast to its intersection with Bayou Liberty Road, also the point of beginning.

**Amend Sec. 2-39. - Precinct descriptions, to provide for more accurate written descriptions of various precinct boundaries to conform to the maps attached as exhibits to Ordinance Council Series No. 19-4200:**

*Precinct M11.* Commence at the intersection of West Causeway Approach and Garden Avenue, also the point of beginning; thence follow Garden Avenue southwest to its intersection with Heavens Drive; thence follow Heavens Drive south and southeast to its intersection with Dorado Dr; thence follow Dorado Dr west to its intersection with retention pond service road; thence follow service road south to its intersection with an electric power line; thence follow the electric power line east, south and southeast to its intersection with W Hickory Street; thence follow W Hickory Street northeast to its intersection with West Causeway Approach Highway;

---

<sup>1</sup> This description confirms the boundaries of Precinct M09 in order to clarify the Council's intent in creating the boundaries of Precinct M10, such that there are no changes to the present boundaries and more accurate descriptions of the boundaries are being provided.

thence follow West Causeway Approach Highway northwest to its intersection with Garden Avenue, also the point of beginning.

*Precinct M12.* Commence at the intersection of West Hickory Street and West Causeway Approach, also the point of beginning; thence follow West Causeway Approach southeast to its intersection with Bayou Chinchuba; thence follow the meanderings of the Bayou Chinchuba in a southwest direction to its intersection with the Lake Pontchartrain shoreline; thence follow the Lake Pontchartrain shoreline in a westerly direction to its intersection with Sawmill Canal; thence follow the meanderings of the Sawmill Canal north to its intersection with an unnamed branch; thence follow the meanderings of the unnamed branch in a northerly direction to its intersection with an electric power line; thence follow the electric power line in a general southeast direction to its intersection with West Hickory Street; thence West Hickory Street northeast to its intersection with West Causeway Approach also the point of beginning.

*Precinct 922.* Commence at the intersection of I-10 and the No. 6 Canal, also the point of beginning; thence follow the No. 6 Canal southeast, northeast, and southeast to its intersection with Salt Bayou; thence follow Salt Bayou south and southwest to its intersection where Salt Bayou flows into Lake Pontchartrain; thence follow a straight line extension south to the St. Tammany Parish/Orleans Parish boundary line; thence follow the St. Tammany Parish/Orleans Parish boundary line northeast to its intersection with a straight line extension leading to the intersection of Lake Pontchartrain and an extension of the W-14 canal; thence follow the W-14 canal north, northeast, and northwest to its intersection with the levee which encircles the new Kingspoint Subdivision; thence follow the levee south, west, north, and northeast to its intersection with Kingspoint Blvd.; thence follow Kingspoint Blvd. north and northeast to its intersection with the W-14 canal.; thence follow the W-14 canal northwest to its intersection with I-10; thence follow I-10 southwest to its intersection with the No. 6 Canal, also the point of beginning.

**Amend Ordinance Council Series No. 19-4200 and Sec. 2-39 - Precinct Descriptions, to provide with respect to the following precincts to provide for more accurate written descriptions of various precinct boundaries to conform to the maps attached as exhibits to Ordinance Council Series No. 19-4200:**

*Precinct F01.* Commence at the intersection of Highway 40 (Uneedus Road) and Anthony Road, also the point of beginning; thence follow Anthony Road north to its intersection with Lee Settlement Road; thence follow Lee Settlement Road east to its intersection with Hay Hollow Road; thence follow Hay Hollow Road northwest, north, east, north, east, north, and northeast to its intersection with Highway 25; thence follow Highway 25 southeast to its intersection with Josephs Road; thence follow Josephs Road northeast to its intersection with the Bogue Falaya River; thence follow the Bogue Falaya River in a general southeast direction to its intersection with Morgan Branch; thence follow Morgan Branch west, southwest, northwest, west, southwest, northwest, and north to its intersection with Highway 40 (Uneedus Road); thence follow Highway 40 (Uneedus Road) southwest and west to its intersection with Anthony Road, also the point of beginning.

*Precinct MD1.* Commence at the intersection of the Tchefuncte River and Bayou De Zaire, also the point of beginning; thence follow Bayou De Zaire north, northwest, and west to its intersection with Highway 21; thence follow Highway 21 north and northeast to its intersection with Dummy Line Road; thence follow Dummy Line Road northwest to its intersection with Black River; thence follow Black River south, southwest, south, southeast and south to its intersection with the shore line of Lake Pontchartrain; thence follow the shore line of Lake Pontchartrain west, northwest, west and southwest to its intersection with the St. Tammany Parish/Tangipahoa Parish boundary line; thence follow the St. Tammany Parish/Tangipahoa Parish boundary line into Lake Pontchartrain to its intersection with the St. Tammany Parish/Jefferson Parish boundary line; thence follow the St. Tammany Parish/Jefferson Parish boundary line southeast to its intersection with a straight line extension leading into the Tchefuncte River; thence follow the straight line extension north to its intersection with the Tchefuncte River; thence follow the Tchefuncte River northeast, north, northwest, and north to its intersection with Bayou De Zaire, also the point of beginning.

*Precinct M01.* Commence at the intersection of the Lake Pontchartrain Causeway and the

St. Tammany Parish/Jefferson Parish boundary line in Lake Pontchartrain, also the point of beginning; thence follow the St. Tammany Parish/Jefferson Parish boundary line northwest to its intersection with a straight line extension leading to the intersection of the Tchefuncte River; thence follow the Tchefuncte River northeast and east to its intersection with an unnamed canal which runs parallel with the shoreline of Lake Pontchartrain; thence follow the canal southeast, east, and southeast to its intersection with Bayou Chinchuba; thence follow Bayou Chinchuba northeast to its intersection with N. Causeway Blvd; thence follow N. Causeway Blvd south to its intersection with the Lake Pontchartrain Causeway; thence follow the Lake Pontchartrain Causeway to its intersection with the St. Tammany Parish/Jefferson Parish boundary line, also the point of beginning.

*Precinct M03.* Commence at the intersection of North Causeway Boulevard and Monroe Street in the City of Mandeville, also the point of beginning; thence follow Monroe Street southeast to its intersection with Wilkinson Street; thence follow Wilkinson Street southwest to its intersection with Lakeshore Drive; thence follow Lakeshore Drive northwest to its intersection where Lakeshore Drive meets Lake Pontchartrain east of Sunset Point Park; thence follow a straight line extension into Lake Pontchartrain to its intersection with the St. Tammany Parish/Orleans Parish boundary line; thence follow the St. Tammany Parish/Orleans Parish boundary line northwest to its intersection with the St. Tammany Parish/Jefferson Parish boundary line; thence follow the St. Tammany Parish/Jefferson Parish boundary line continuing northwest to its intersection with the Lake Pontchartrain Causeway; thence follow the Lake Pontchartrain Causeway northeast becoming North Causeway Boulevard to its intersection with Monroe Street, also the point of beginning.

*Precinct M05.* Commence at the intersection of Gerard Street and East Florida Street in the City of Mandeville, also the point of beginning; thence follow East Florida Street southeast to its intersection with Atalin Street; thence follow Atalin Street southwest to its intersection with a canal leading into Bayou Castine; thence follow the canal east and south to its intersection with Bayou Castine; thence follow Bayou Castine southwest to its intersection where Bayou Castine flows into Lake Pontchartrain; thence follow a straight line extension into Lake Pontchartrain south to its intersection with the St. Tammany Parish/Orleans Parish boundary line; thence follow the St. Tammany Parish/Orleans Parish boundary line northwest to its intersection with a straight line extension leading to a point east of Sunset Point Park; thence follow the straight line extension north to its intersection with the shoreline of Lake Pontchartrain; thence follow the shoreline of Lake Pontchartrain southeast to its intersection with Little Bayou Castine; thence follow Little Bayou Castine north to its intersection with Lakeshore Drive; thence follow Lakeshore Drive northwest to its intersection with Gerard Street; thence follow Gerard Street northeast to its intersection with East Florida Street, also the point of beginning.

*Precinct M09.* Commence at the intersection of Florida Street (a.k.a. Highway 190) and Atalin Street, also the point of beginning; thence follow Atalin Street south to its intersection with Bayou Castine; thence follow the meanderings of Bayou Castine northeast to its intersection with a drainage canal; thence follow the drainage canal north and northwest to its intersection with Austerlitz St.; thence follow Austerlitz St. northwest to its intersection with Soutl St.; thence follow Soutl St. southwest to its intersection of Florida Street (a.k.a. Highway 190); thence follow Florida Street (a.k.a. Highway 190) northwest to its intersection with Atalin Street, also the point of beginning.<sup>2</sup>

*Precinct M10.* Commence at the intersection of Austerlitz Street and Soutl Street, also the point of beginning; thence follow Soutl Street northeast to its intersection with Sycamore Place, thence follow Sycamore Place east and northeast to its intersection with Culver Ct., thence follow Culver Ct south to its intersection with the St Tammany Access Road, thence follow the St. Tammany Access Road east, north and east to its intersection with an electric power line; thence follow the electric power line south and east to its intersection with a pipeline, thence follow the pipeline southwest to its intersection with Bayou Castine, thence follow Bayou Castine southwest to its intersection with a drainage canal; thence follow the drainage canal north and northwest to its intersection with Austerlitz St, thence follow Austerlitz St northwest to its intersection with

---

<sup>2</sup> This description confirms the boundaries of Precinct M09 in order to clarify the Council's intent in creating the boundaries of Precinct M10, such that there are no changes to the present boundaries and more accurate descriptions of the boundaries are being provided.

Soult St, also the point of beginning.

*Precinct M11.* Commence at the intersection of West Causeway Approach and Garden Avenue, also the point of beginning; thence follow Garden Avenue southwest to its intersection with Heavens Drive; thence follow Heavens Drive south and southeast to its intersection with Dorado Dr; thence follow Dorado Dr west to its intersection with retention pond service road; thence follow service road south to its intersection with an electric power line; thence follow the electric power line east, south and southeast to its intersection with W Hickory Street; thence follow W Hickory Street northeast to its intersection with West Causeway Approach Highway; thence follow West Causeway Approach Highway northwest to its intersection with Garden Avenue, also the point of beginning.

*Precinct M12.* Commence at the intersection of West Hickory Street and West Causeway Approach, also the point of beginning; thence follow West Causeway Approach southeast to its intersection with Bayou Chinchuba; thence follow the meanderings of the Bayou Chinchuba in a southwest direction to its intersection with the Lake Pontchartrain shoreline; thence follow the Lake Pontchartrain shoreline in a westerly direction to its intersection with Sawmill Canal; thence follow the meanderings of the Sawmill Canal north to its intersection with an unnamed branch; thence follow the meanderings of the unnamed branch in a northerly direction to its intersection with an electric power line; thence follow the electric power line in a general southeast direction to its intersection with West Hickory Street; thence West Hickory Street northeast to its intersection with West Causeway Approach also the point of beginning.

*Precinct S18.* Commence at the intersection of Bayou Bonfouca and Bayou Lasseigne, also the point of beginning; thence follow Bayou Lasseigne southeast to its intersection with the west tracks of the Norfolk Southern Rail Road; thence follow the west tracks of the Norfolk Southern Rail Road southwest and southeast to its intersection with the Norfolk Southern Rail Road; thence follow the Norfolk Southern Rail Road continuing southwest to its intersection with an electrical transmission line; thence follow electrical transmission line southeast to its intersection with Pontchartrain Drive (Highway 11); thence follow Pontchartrain Drive (Highway 11) southwest to its intersection with the St. Tammany Parish/Orleans Parish boundary line in Lake Pontchartrain; thence follow the St. Tammany Parish/Orleans Parish boundary line northwest and west to its intersection with a straight line extension from the point where Bayou Liberty flows into Lake Pontchartrain; thence follow the straight line extension north to its intersection with Bayou Liberty; thence follow the meanderings of Bayou Liberty northeast to its intersection with Thompson Rd.; thence follow Thompson Rd. southeast to its intersection with Bayou Liberty Rd.; thence follow Bayou Liberty Rd. northeast to its intersection with Nunez Rd.; thence follow Nunez Rd. south to its intersection with Laurent Rd.; thence follow Laurent Rd. northeast to its intersection with Baldwin Dr.; thence follow Baldwin Dr. southeast to its intersection with Ridgewood Dr.; thence follow Ridgewood Dr. southwest to its intersection with Dunbar Dr.; thence follow Dunbar Drive southeast to its intersection with a gravel driveway into the property address of 57233 Dunbar Rd; thence follow the gravel driveway continuing southeast, then east, southeast, and south to its intersection with a cleared path leading to a boat launch on the property leading into Bayou Bonfouca; thence follow the cleared path southeast and southwest to its intersection with a boat launch leading into Bayou Bonfouca; thence follow the boat launch south to its intersection with Bayou Bonfouca; thence follow Bayou Bonfouca southeast and northeast to its intersection with Bayou Lasseigne, also the point of beginning.

*Precinct S21.* Commence at the intersection of Highway 190 East and Brookter Road, also the point of beginning; thence follow Brookter Road south and southeast to its intersection with Kingspoint Blvd.; thence follow Kingspoint Blvd. southwest to its intersection with the W-14 Canal; thence follow the W-14 Canal continuing northwest, then southwest, west, northwest, north, northwest, north, and northeast to its intersection with Fremaux Avenue; thence follow Fremaux Avenue east crossing over I-10 and becoming Highway 190 East; thence follow Highway 190 East continuing east, then southeast to its intersection with Brookter Road, also the point of beginning.

*Precinct S22.* Commence at the intersection of Landmark Drive and Oak Harbor Blvd., also the point of beginning; thence follow Oak Harbor Blvd., north, east, northeast, west, and northwest to its intersection with Highway 11; thence follow Highway 11 northeast to its intersection with Schneider Canal; thence follow Schneider Canal east, southeast, east, and

southeast to its intersection with West Howze Beach Road; thence follow West Howze Beach Road northeast to its intersection with Highway 433 (Old Spanish Trail); thence follow Highway 433 (Old Spanish Trail) northwest to its intersection with East Terrance Avenue; thence follow East Terrance Avenue to Terrance Avenue northeast and north to its intersection with Ash Street; thence follow Ash Street west to its intersection with 10th Street; thence follow 10th Street north to its intersection with Daney Street; thence follow Daney Street east to its intersection with the W-14 Canal; thence follow the meanderings of the W-14 Canal southeast, east, and northeast to its intersection with I-10; thence follow I-10 southwest to its intersection with the Oak Harbor Blvd. bridge; thence follow Oak Harbor Blvd. northwest to the intersection of Landmark Drive; also the point of beginning.

*Precinct 201.* Commence at the intersection of the St. Tammany Parish/Washington Parish boundary line and the Tchefuncte River, which is also the St. Tammany Parish/Tangipahoa Parish boundary line, also the point of beginning; thence follow the Tchefuncte River south, southeast, south, southeast, south, southwest, southeast, and south to its intersection with Highway 40 (Uneedus Road); thence follow Highway 40 (Uneedus Road) southeast and south to its intersection with Anthony Road; thence follow Anthony Road north to its intersection with Lee Settlement Road; thence follow Lee Settlement Road east to its intersection with Hay Hollow Road; thence follow Hay Hollow Road northwest, north, east, north, east, north, and northeast to its intersection with Highway 25; thence follow Highway 25 southeast to its intersection with Josephs Road; thence follow Josephs Road east to its intersection with the Bogue Falaya River; thence follow the Bogue Falaya River southeast, south, and southwest to its intersection with Highway 40 (Bush-Folsom Road); thence follow Highway 40 (Bush-Folsom Road) east to its intersection with Highway 1080 (aka Factory Rd.); thence follow Highway 1080 (aka Factory Rd.) north, east and north to its intersection with Highway 437; thence follow Highway 437 north to its intersection with the St. Tammany Parish/Washington Parish boundary line; thence follow said line northwest to its intersection with the St. Tammany Parish/Tangipahoa Parish boundary line and the Tchefuncte River, also the point of beginning.

*Precinct 202.* Commence at the intersection of Highway 40 (Uneedus Road) and the Tchefuncte River, which is also the St. Tammany Parish/Tangipahoa Parish boundary line, also the point of beginning; thence follow the Tchefuncte River south, southwest, east, south, southeast, southwest, east, south, southwest, and southeast to its intersection with Highway 1077 and Highway 1078 (Bennett Bridge Road); thence follow Highway 1077 and Highway 1078 (Bennett Bridge Road) northeast, east, and southeast to its intersection with Highway 1077 (Savannah Road); thence follow Highway 1077 (Savannah Road) northeast to its intersection with Highway 1077 (Willie Road); thence follow Highway 1077 (Willie Road) southeast, east, southeast, and east to its intersection with Highway 25; thence follow Highway 25 southeast to its intersection with Million Dollar Road; thence follow Million Dollar Road east to its intersection with the Bogue Falaya River; thence follow the Bogue Falaya River northeast, north, northwest, north, northeast, and north to its intersection with Morgan Branch; thence follow Morgan Branch west, southwest, northwest, west, southwest, northwest, and north to its intersection with Highway 40 (Uneedus Road); thence follow Highway 40 (Uneedus Road) southwest, west, and north to its intersection with the Tchefuncte River, which is also the St. Tammany Parish/Tangipahoa Parish boundary line, also the point of beginning.

*Precinct 204.* Commence at the intersection of Highway 1080 (North Factory Road) and Highway 437 (Middle Road), also the point of beginning; thence follow Highway 437 (Middle Road) southwest, southeast, south, southwest, south, and southeast to its intersection with Bill's Creek; thence follow the meanderings of Bill's Creek southwest, west, southwest, south, southwest, south, southwest, and southeast to its intersection with Simalusa Creek; thence follow the meanderings of Simalusa Creek south and southwest to its intersection with the Bogue Falaya River; thence follow the meanderings of the Bogue Falaya River northwest, north, northwest, north, and northeast to its intersection with Highway 40; thence follow Highway 40 east to its intersection with Highway 1080 (North Factory Road); thence follow Highway 1080 (North Factory Road) north, northeast, east, north, and northeast to its intersection with Highway 437 (Middle Road), also the point of beginning.

*Precinct 401.* Commence at the intersection of Highway 22 and the Tchefuncte River, also the point of beginning; thence follow the meanderings of the Tchefuncte River south, southwest,

and south to its intersection with an unnamed canal which runs parallel with the shoreline of Lake Pontchartrain; thence follow the unnamed canal southeast, east, and southeast to its intersection with Sawmill Canal; thence follow Sawmill Canal northeast, east and northeast to its intersection with an unnamed creek; thence follow the unnamed creek northwest, north and northwest to its intersection with an electric power line that runs to the northwest and southeast; thence follow the electric power line southeast to its intersection with an electric power line that runs to the north; thence follow the north bound electric power line north approximately 570', thence continue northwest along said power line approximately 890' to a point approximately 230' east of Woodridge Boulevard, thence follow the power line as it runs parallel to Woodridge Boulevard approximately 4,000' to its intersection with Highway 22; thence follow Highway 22 west, southwest and west to its intersection with the Tchefuncte River, also the point of beginning.

*Precinct 409.* Commence at the intersection of Highway 1088 and I-12, also the point of beginning; thence follow I-12 southeast to its intersection with a pipeline; thence follow the pipeline southwest to its intersection with Bayou Castine; thence follow Bayou Castine southwest to its intersection with the Lake Pontchartrain Shoreline; thence follow a straight line extension to the St. Tammany Parish/Orleans Parish boundary line; thence follow the St. Tammany Parish/Orleans Parish boundary line east and northeast to its intersection with a straight line extension leading to the intersection of Cane Bayou with the Lake Pontchartrain Shoreline; thence follow Cane Bayou north and northeast to its intersection with Highway 190; thence follow Highway 190 southeast to its intersection with North Pontchartrain Drive; thence follow North Pontchartrain Drive north, northeast, east, and southeast to its intersection with Fish Hatchery Road; thence follow Fish Hatchery Road northeast, northwest, north, northeast, and north to its intersection with Beaver Ball Road; thence follow Beaver Ball Road northeast, north, northwest, north, and northwest to its intersection with Highway 1088; thence follow Highway 1088 southwest, west, and southwest to its intersection with I-12, also the point of beginning.

*Precinct 412.* Commence at the intersection of Highway 1088 and I-12, also the point of beginning; thence follow Highway 1088 southwest to its intersection with Trinity Dr; thence follow Trinity Dr south to its intersection with Olvey Dr.; thence follow Olvey Dr. northeast and south to its intersection with Sycamore Place; thence follow Sycamore Place east, south and southeast to its intersection with Culver Ct; thence follow Culver Ct south to its intersection with the St Tammany Access Road, thence follow the St. Tammany Access Road east, north and east to its intersection with an electric power line; thence follow the electric power line south and east to its intersection with a pipeline; thence follow the pipeline northeast to its intersection with I-12; thence follow I-12 northwest to its intersection with Highway 1088, also the point of beginning.

*Precinct 421.* Commence at the intersection of Highway 22 and Heavens Drive, also the point of beginning, thence follow Heavens Drive south and southeast to its intersection with Dorado Dr; thence follow Dorado Dr west to its intersection with retention pond service road; thence follow service road south to its intersection with an electric power line; thence follow the electric power line west and southwest; thence continue northwest along said power line approximately 840' to its intersection with an electric power line that runs to the north; thence follow the north bound electric power line north approximately 570', thence continue northwest along said power line approximately 890' to a point approximately 230' east of Woodridge Boulevard, thence follow the power line as it runs parallel to Woodridge Boulevard approximately 4,000' to its intersection with Highway 22; thence follow Highway 22 southeast to its intersection with Heavens Drive, also the point of beginning.

*Precinct 703.* Commence at the intersection of Highway 190 and Bayou Lacombe, also the point of beginning; thence follow the meanderings of Bayou Lacombe southeast and south to its intersection where Bayou Lacombe flows into Lake Pontchartrain; thence follow a straight line extension south to its intersection with the St. Tammany Parish/Orleans Parish boundary line in Lake Pontchartrain; thence follow the St. Tammany Parish/Orleans Parish boundary line southwest to its intersection with a straight line extension leading to Cane Bayou; thence follow the straight line extension north to its intersection with Cane Bayou; thence follow Cane Bayou continuing north, then northeast to its intersection with Highway 190; thence follow Highway 190 southeast and northeast to its intersection with Bayou Lacombe, also the point of beginning.

*Precinct 704.* Commence at the intersection of Highway 190 and Bayou Lacombe, also the



point of beginning; thence follow the meanderings of Bayou Lacombe southeast and south to its intersection where Bayou Lacombe flows into Lake Pontchartrain; thence follow the shore line of Lake Pontchartrain east and southeast to its intersection with a pipeline leading into Lake Pontchartrain; thence follow the pipeline northeast to its intersection with Bayou Paquet Road; thence follow Bayou Paquet Road east and southeast to its intersection with Transmitter Road; thence follow Transmitter Road north to its intersection with Highway 190; thence follow Highway 190 west, northwest, and southwest to its intersection with Bayou Lacombe, also the point of beginning.

*Precinct 705.* Commence at the intersection of Transmitter Road and the Tammany Trace, also the point of beginning; thence follow the Tammany Trace east to its intersection with Park Avenue; thence follow Park Avenue south and southwest to its intersection with Bayou Paquet; thence follow Bayou Paquet southeast and south to its intersection with Bayou Paquet Road; thence follow Bayou Paquet Road southeast to its intersection with Thompson Road; thence follow Thompson Road southwest and southeast to its intersection with Bayou Liberty; thence follow the meanderings of Bayou Liberty southwest to its intersection where Bayou Liberty flows into Lake Pontchartrain; thence follow a straight line extension south to its intersection with the St. Tammany Parish/Orleans Parish boundary line in Lake Pontchartrain; thence follow the St. Tammany Parish/Orleans Parish boundary line west and southwest to its intersection with a straight line extension leading to Bayou Lacombe; thence follow the straight line extension north to its intersection where Bayou Lacombe meets the shoreline of Lake Pontchartrain; thence follow the shoreline of Lake Pontchartrain east and southeast to its intersection with a pipeline leading into Lake Pontchartrain; thence follow the pipeline northeast to its intersection with Bayou Paquet Road; thence follow Bayou Paquet Road east and southeast to its intersection with Transmitter Road; thence follow Transmitter Road north to its intersection with the Tammany Trace, also the point of beginning.

*Precinct 909.* Commence at the intersection of the St. Tammany Parish/Orleans Parish boundary line in Lake Pontchartrain and I-10, also the point of beginning; thence follow I-10 northeast to its intersection with the No. 6 canal; thence follow the No. 6 Canal southeast, northeast, and southeast to its intersection with Salt Bayou; thence follow Salt Bayou south, and southwest to its intersection where Salt Bayou flows into Lake Pontchartrain; thence follow a straight line extension south to the St. Tammany Parish/Orleans Parish boundary line; thence follow the St. Tammany Parish/Orleans Parish boundary line into Lake Pontchartrain to its intersection with I-10, also the point of beginning.

*Precinct 910.* Commence at the intersection of Clipper Drive and Eden Isles Drive, also the point of beginning; thence follow Eden Isles Drive southeast to its intersection with Marina Drive; thence follow Marina Drive southeast to its intersection with Landmark Drive; thence follow Landmark Drive east to its intersection with Oak Harbor Blvd.; thence follow Oak Harbor Blvd. southeast to its intersection with I-10; thence follow I-10 southwest to its intersection with the shoreline of Lake Pontchartrain; thence follow the shoreline of Lake Pontchartrain northwest to its intersection with the mouth of Oak Harbor Pass; thence follow Oak Harbor Pass northwest, northeast, and northwest to its intersection with Middle Canal; thence follow Middle Canal northwest to its intersection with Blackfin Canal; thence follow Blackfin Canal northeast to its intersection with Eden Isles Canal S, thence follow Eden Isles Canal S northwest to its intersection with the bridge on Clipper Dr.; thence follow Clipper Dr. northeast to its intersection with Eden Isles Drive, also the point of beginning.

*Precinct 911.* Commence at the intersection of Highway 11 and the St. Tammany Parish/Orleans Parish boundary line in Lake Pontchartrain, also the point of beginning; thence follow the St. Tammany Parish/Orleans Parish boundary line east and southeast to its intersection with I-10; thence follow I-10 northeast to its intersection with the shoreline of Lake Pontchartrain; thence follow the shoreline of Lake Pontchartrain northwest to its intersection with the mouth of Oak Harbor Pass; thence follow Oak Harbor Pass northwest, northeast, and northwest to its intersection with Middle Canal; thence follow Middle Canal northwest to its intersection with Blackfin Canal; thence follow Blackfin Canal northeast to its intersection with Eden Isles Canal S; thence follow Eden Isles Canal S northwest to its intersection with the bridge on Clipper Dr.; thence follow Clipper Dr. northeast to its intersection with Eden Isles Drive; thence follow Eden Isles Drive northwest to its intersection with Highway 11; thence follow Highway 11 southwest to

its intersection with the St. Tammany Parish/Orleans Parish boundary line in Lake Pontchartrain, also the point of beginning.

*Precinct 912.* Commence at the intersection of Bayou Bonfouca and Bayou Liberty Road, also the point of beginning; thence follow Bayou Liberty Road northwest, west, and southwest to its intersection with Napoleon Avenue; thence follow Napoleon Avenue southeast to its intersection with Benjamin Road; thence follow Benjamin Road southwest and southeast to its intersection with Laurent Road; thence follow Laurent Road southwest, northwest, and southwest to its intersection with Baldwin Drive; thence follow Baldwin Drive southeast to its intersection with Ridgewood Drive; thence follow Ridgewood Drive southwest to its intersection with Dunbar Drive; thence follow Dunbar Drive southeast to its intersection with a gravel driveway into the property address of 57233 Dunbar Rd; thence follow the gravel driveway continuing southeast, then east, southeast, and south to its intersection with a cleared path leading to a boat launch on the property leading into Bayou Bonfouca; thence follow the cleared path southeast and southwest to its intersection with a boat launch leading into Bayou Bonfouca; thence follow the boat launch south to its intersection with Bayou Bonfouca; thence follow Bayou Bonfouca east, northeast, north, northeast, southeast, and northeast to its intersection with Bayou Liberty Road, also the point of beginning.

*Precinct 918.* Commence at the intersection of Highway 190 Business (Shortcut Highway) and Doubloon Branch, also the point of beginning; thence follow the meanderings of Doubloon Branch south, southeast, southwest, west, northwest, south, southeast, west, and southwest to its intersection with the W-14 canal; thence follow the W-14 canal southeast, southwest, and south to an extension of the W-14 canal; thence follow the extension of the W-14 canal to its intersection where the extension of the W-14 canal flows into Lake Pontchartrain; thence follow a straight line extension south to the St. Tammany Parish/Orleans Parish boundary line; thence follow the St. Tammany Parish/Orleans Parish boundary line southeast, east, northeast, east, southeast, northeast, and southeast to its intersection with the St. Tammany Parish/St. Bernard Parish boundary line; thence follow the St. Tammany Parish/St. Bernard Parish boundary line continuing southeast then east and northeast through Lake Borgne to its intersection with the St. Tammany Parish boundary line at the Louisiana/Mississippi border; thence follow the Louisiana/Mississippi border west and northwest to the mouth of the Pearl River; thence follow the meanderings of the Pearl River northwest, west, southwest, west, northwest, and north to its intersection with Highway 90; thence follow Highway 90 west and southwest to its intersection with Highway 190 Business (Shortcut Highway); thence follow Highway 190 Business (Shortcut Highway) west and northwest to its intersection with Doubloon Branch, also the point of beginning.

*Precinct 922.* Commence at the intersection of I-10 and the No. 6 Canal, also the point of beginning; thence follow the No. 6 Canal southeast, northeast, and southeast to its intersection with Salt Bayou; thence follow Salt Bayou south and southwest to its intersection where Salt Bayou flows into Lake Pontchartrain; thence follow a straight line extension south to the St. Tammany Parish/Orleans Parish boundary line; thence follow the St. Tammany Parish/Orleans Parish boundary line northeast to its intersection with a straight line extension leading to the intersection of Lake Pontchartrain and an extension of the W-14 canal; thence follow the W-14 canal north, northeast, and northwest to its intersection with the levee which encircles the new Kingspoint Subdivision; thence follow the levee south, west, north, and northeast to its intersection with Kingspoint Blvd.; thence follow Kingspoint Blvd. north and northeast to its intersection with the W-14 canal.; thence follow the W-14 canal northwest to its intersection with I-10; thence follow I-10 southwest to its intersection with the No. 6 Canal, also the point of beginning.

BE IT FURTHER ORDAINED that pursuant to Louisiana Revised Statute 18:533, the polling location of Precinct M12 shall be designated as Pontchartrain Elementary School, located at 1500 West Causeway Approach, Mandeville, Louisiana 70471.

BE IT FURTHER ORDAINED that Section 2-41 of the St. Tammany Parish Code of Ordinances be amended to apportion the above-described Precincts M11, M12, and 922 to the appropriate Council Districts as follows:

**Amend Sec. 2-41 to provide in pertinent part:**

(4) District 4 consists of precincts 102, 401, 402, 404, 413, 418, 419, 421, M01, M06, ~~and MD1, M11, and M12.~~

(13) District 13 consists of precincts 806, 810, 811, 813, 816, 908, 909, 910, 911, 918, 922, and S18.

**REPEAL:** All ordinances or parts of Ordinances in conflict herewith are hereby repealed.

**SEVERABILITY:** If any provision of this Ordinance shall be held to be invalid, such invalidity shall not affect other provisions herein which can be given effect without the invalid provision and to this end the provisions of this Ordinance are hereby declared to be severable.

**EFFECTIVE DATE:** This Ordinance shall become effective upon signature of the Council Chairman and Parish President.

MOVED FOR ADOPTION BY: \_\_\_\_\_, SECONDED BY: \_\_\_\_\_

WHEREUPON THIS ORDINANCE WAS SUBMITTED TO A VOTE AND RESULTED IN THE FOLLOWING:

YEAS:

NAYS:

ABSTAIN:

ABSENT:

THIS ORDINANCE WAS DECLARED DULY ADOPTED AT A REGULAR MEETING OF THE PARISH COUNCIL ON THE 30 DAY OF JUNE, 2021; AND BECOMES ORDINANCE COUNCIL SERIES NO. \_\_\_\_\_.

\_\_\_\_\_  
MICHAEL LORINO JR., COUNCIL CHAIRMAN

ATTEST:

\_\_\_\_\_  
KATRINA L. BUCKLEY, COUNCIL CLERK

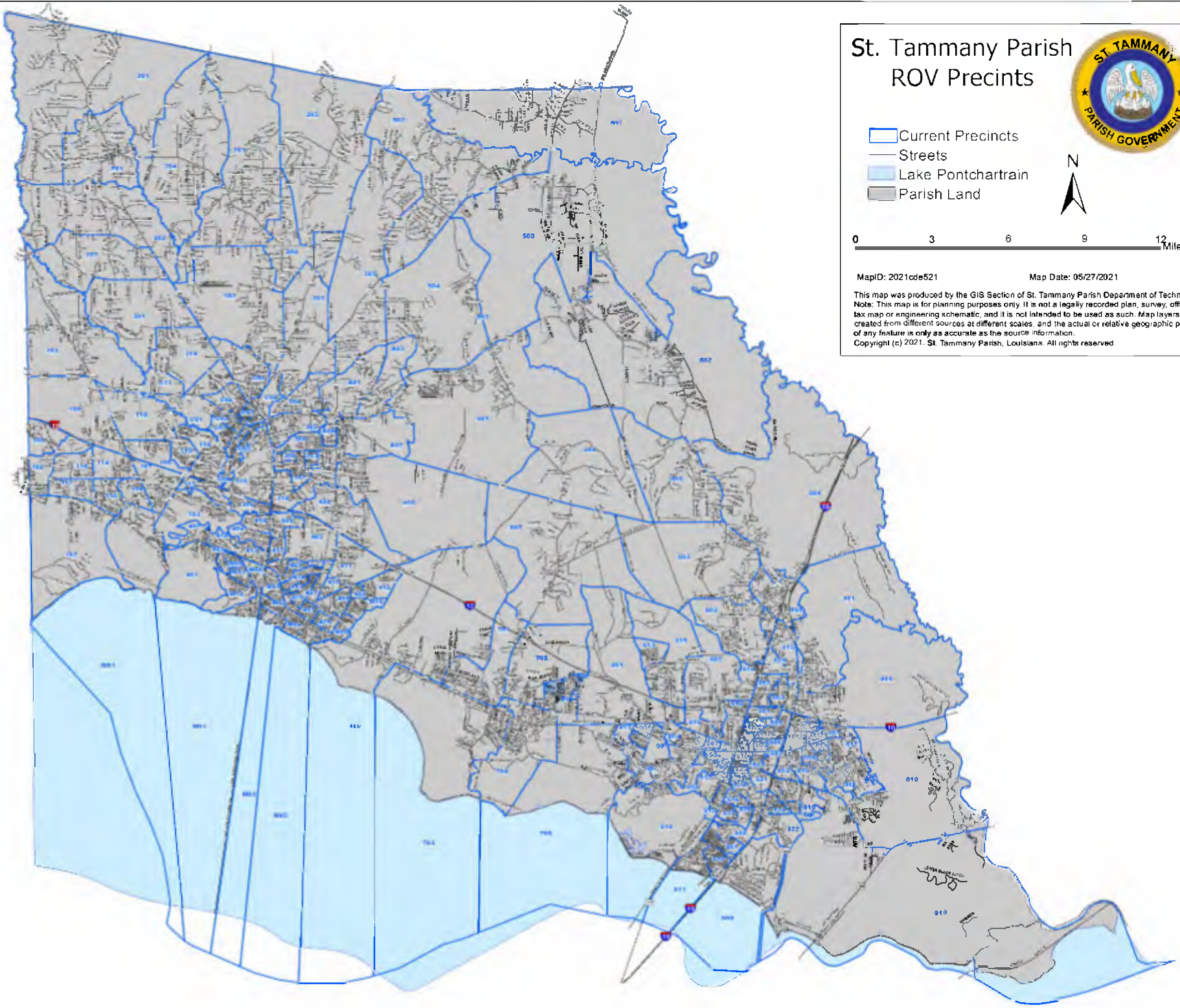
\_\_\_\_\_  
MICHAEL B. COOPER, PARISH PRESIDENT

Published Introduction: JUNE 30, 2021

Published Adoption: \_\_\_\_\_, 2021

Delivered to Parish President: \_\_\_\_\_, 2021 at \_\_\_\_\_

Returned to Council Clerk: \_\_\_\_\_, 2021 at \_\_\_\_\_



# St. Tammany Parish ROV Precincts



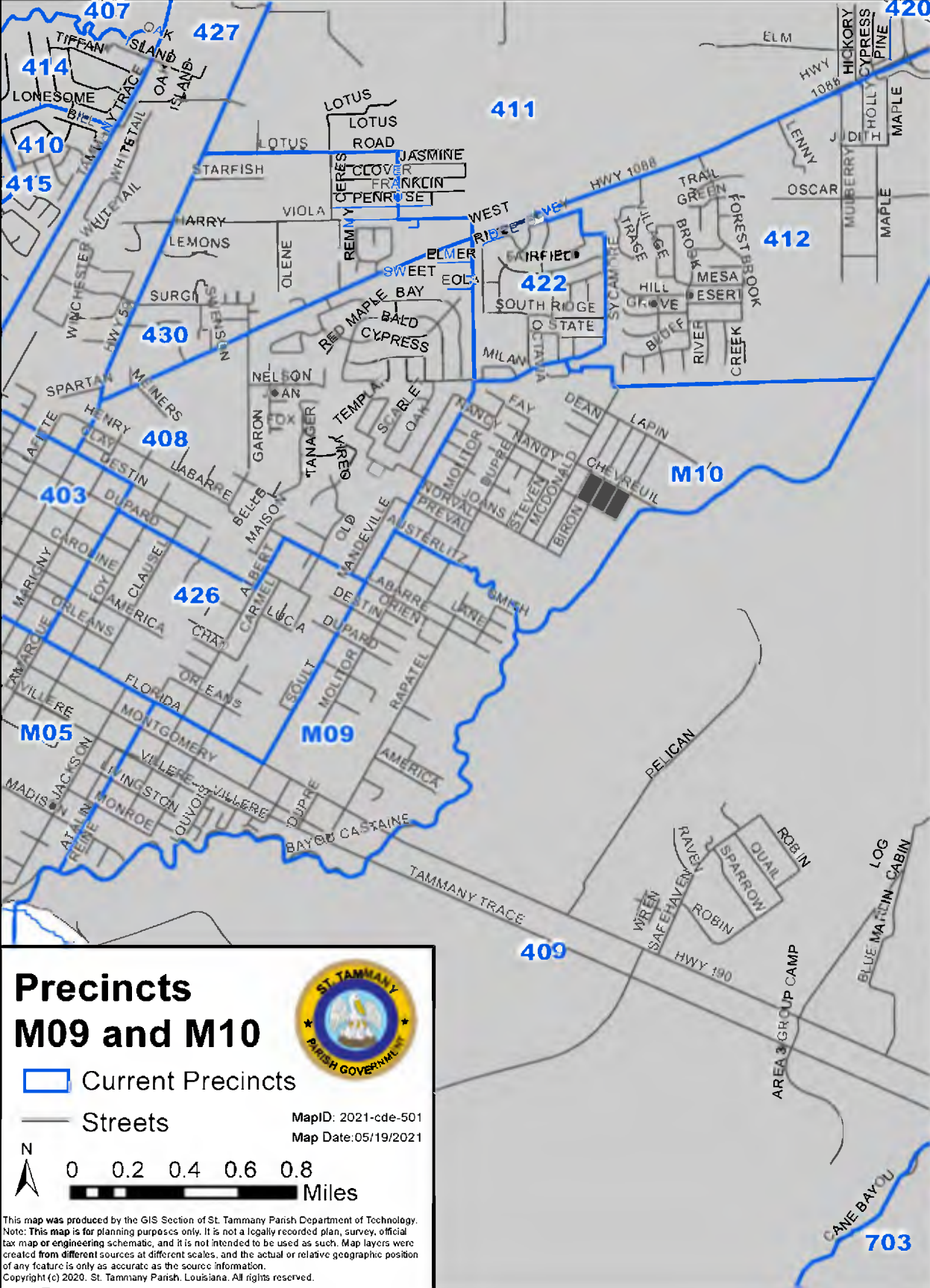
- Current Precincts
- Streets
- Lake Pontchartrain
- Parish Land



0 3 6 9 12 Miles

MapID: 2021cde521 Map Date: 05/27/2021

This map was produced by the GIS Section of St. Tammany Parish Department of Technology. Note: This map is for planning purposes only. It is not a legally recorded plan, survey, official tax map or engineering schematic, and it is not intended to be used as such. Map layers were created from different sources at different scales, and the actual or relative geographic position of any feature is only as accurate as the source information. Copyright (c) 2021. St. Tammany Parish, Louisiana. All rights reserved

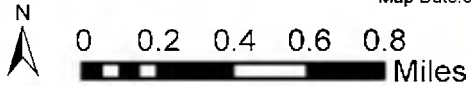


# Precincts M09 and M10



- Current Precincts
- Streets

MapID: 2021-cde-501  
Map Date: 05/19/2021



This map was produced by the GIS Section of St. Tammany Parish Department of Technology. Note: This map is for planning purposes only. It is not a legally recorded plan, survey, official tax map or engineering schematic, and it is not intended to be used as such. Map layers were created from different sources at different scales, and the actual or relative geographic position of any feature is only as accurate as the source information. Copyright (c) 2020. St. Tammany Parish, Louisiana. All rights reserved.

ST. TAMMANY PARISH COUNCIL

ORDINANCE

ORDINANCE CALENDAR NO. 6729

ORDINANCE COUNCIL SERIES NO. \_\_\_\_

COUNCIL SPONSOR \_\_\_\_\_

PROVIDED BY: CIVIL ADA

INTRODUCED BY: \_\_\_\_\_

SECONDED BY: \_\_\_\_\_

ON THE 30 DAY OF JUNE, 2021

ORDINANCE TO AMEND ST. TAMMANY PARISH CODE OF ORDINANCES, SECTION 2-39 PRECINCT DESCRIPTIONS, AND TO AMEND ORDINANCE COUNCIL SERIES NO. 19-4200 “ORDINANCE TO CREATE PROSPECTIVE PRECINCTS, CHANGE THE CONFIGURATION, BOUNDARIES, OR DESIGNATIONS OF ITS ELECTION PRECINCTS IN ACCORDANCE WITH LOUISIANA REVISED STATUTES 18:532 AND 18:532.1”; AND TO PROVIDE A POLLING BOOTH LOCATION PURSUANT TO LOUISIANA REVISED STATUTE 18:533; AND TO AMEND ST. TAMMANY PARISH CODE OF ORDINANCES SECTION 2-41 TO APPORTION CERTAIN PRECINCTS TO THE CORRECT COUNCIL DISTRICT.

WHEREAS, the precincts as described in St. Tammany Parish Code of Ordinances Section 2-39 Precinct Descriptions and Ordinance Council Series No. 19-4200 need to be amended in order to accurately describe in writing the geographic boundaries of those precincts to match the maps attached as an exhibit thereto; and,

WHEREAS, the Parish Council has the authority pursuant to Louisiana Revised Statute 18:532 to change the configuration, boundaries, or designation of its election precincts, and did so by Ordinance Council Series No. 19-4200; and,

WHEREAS, the Louisiana Secretary of State has approved the merger and/or split of precincts in Ordinance Council Series No. 19-4200; and,

WHEREAS, amendment to Ordinance Council Series No. 19-4200 is necessary to provide for more accurate written descriptions of the various precinct boundaries to conform to the maps attached as exhibits to Ordinance Council Series No. 19-4200 and to confirm the boundaries of Precinct M09 in order to clarify the Council’s intent in creating the boundaries of Precinct M10, this amendment creating no changes to the present boundaries and providing an accurate written description of the boundaries; and,

WHEREAS, pursuant to Louisiana Revised Statute 18:533, the polling location of Precinct M12 shall be designated as Pontchartrain Elementary School, located at 1500 West Causeway Approach, Mandeville, Louisiana 70471; and,

WHEREAS, Precincts M11, M12, and 922 need to be apportioned to the appropriate Council Districts by amending Section 2-41 of the St. Tammany Parish Code of Ordinances; and

WHEREAS, this ordinance ratifies the Emergency Ordinance correcting prospective precincts introduced and adopted June 30, 2021.

THE PARISH OF ST. TAMMANY HEREBY ORDAINS: that it amends Ordinance Council Series No. 19-4200 by replacing specific written precinct descriptions as designated in Ordinance Council Series No. 19-4200 with the following specific written precinct descriptions, which changes no boundaries, and that the following precincts be amended in the St. Tammany Parish Code of Ordinances Section 2-39 Precinct Descriptions:

**Amend Ordinance Council Series No. 19-4200, to provide for more accurate written descriptions of various precinct boundaries to conform to the maps attached as exhibits to Ordinance Council Series No. 19-4200:**

*Precinct M09.* Commence at the intersection of Florida Street (a.k.a. Highway 190) and Atalin Street, also the point of beginning; thence follow Atalin Street south to its intersection with Bayou Castine; thence follow the meanderings of Bayou Castine northeast to its intersection with a drainage canal; thence follow the drainage canal north and northwest to its intersection with Austerlitz St.; thence follow Austerlitz St. northwest to its intersection with Soult St.; thence follow Soult St. southwest to its intersection of Florida Street (a.k.a. Highway 190); thence follow Florida Street (a.k.a. Highway 190) northwest to its intersection with Atalin Street, also the point of beginning.<sup>1</sup>

*Precinct 704.* Commence at the intersection of Highway 190 and Bayou Lacombe, also the point of beginning; thence follow the meanderings of Bayou Lacombe southeast and south to its intersection where Bayou Lacombe flows into Lake Pontchartrain; thence follow the shore line of Lake Pontchartrain east and southeast to its intersection with a pipeline leading into Lake Pontchartrain; thence follow the pipeline northeast to its intersection with Bayou Paquet Road; thence follow Bayou Paquet Road east and southeast to its intersection with Transmitter Road; thence follow Transmitter Road north to its intersection with Highway 190; thence follow Highway 190 west, northwest, and southwest to its intersection with Bayou Lacombe, also the point of beginning.

*Precinct 912.* Commence at the intersection of Bayou Bonfouca and Bayou Liberty Road, also the point of beginning; thence follow Bayou Liberty Road northwest, west, and southwest to its intersection with Napoleon Avenue; thence follow Napoleon Avenue southeast to its intersection with Benjamin Road; thence follow Benjamin Road southwest and southeast to its intersection with Laurent Road; thence follow Laurent Road southwest, northwest, and southwest to its intersection with Baldwin Drive; thence follow Baldwin Drive southeast to its intersection with Ridgewood Drive; thence follow Ridgewood Drive southwest to its intersection with Dunbar Drive; thence follow Dunbar Drive southeast to its intersection with a gravel driveway into the property address of 57233 Dunbar Rd; thence follow the gravel driveway continuing southeast, then east, southeast, and south to its intersection with a cleared path leading to a boat launch on the property leading into Bayou Bonfouca; thence follow the cleared path southeast and southwest to its intersection with a boat launch leading into Bayou Bonfouca; thence follow the boat launch south to its intersection with Bayou Bonfouca; thence follow Bayou Bonfouca east, northeast, north, northeast, southeast, and northeast to its intersection with Bayou Liberty Road, also the point of beginning.

**Amend Sec. 2-39. - Precinct descriptions, to provide for more accurate written descriptions of various precinct boundaries to conform to the maps attached as exhibits to Ordinance Council Series No. 19-4200:**

*Precinct M11.* Commence at the intersection of West Causeway Approach and Garden Avenue, also the point of beginning; thence follow Garden Avenue southwest to its intersection with Heavens Drive; thence follow Heavens Drive south and southeast to its intersection with Dorado Dr; thence follow Dorado Dr west to its intersection with retention pond service road; thence follow service road south to its intersection with an electric power line; thence follow the electric power line east, south and southeast to its intersection with W Hickory Street; thence follow W Hickory Street northeast to its intersection with West Causeway Approach Highway; thence follow West Causeway Approach Highway northwest to its intersection with Garden Avenue, also the point of beginning.

*Precinct M12.* Commence at the intersection of West Hickory Street and West Causeway Approach, also the point of beginning; thence follow West Causeway Approach southeast to its intersection with Bayou Chinchuba; thence follow the meanderings of the Bayou Chinchuba in a

---

<sup>1</sup> This description confirms the boundaries of Precinct M09 in order to clarify the Council's intent in creating the boundaries of Precinct M10, such that there are no changes to the present boundaries and more accurate descriptions of the boundaries are being provided.

southwest direction to its intersection with the Lake Pontchartrain shoreline; thence follow the Lake Pontchartrain shoreline in a westerly direction to its intersection with Sawmill Canal; thence follow the meanderings of the Sawmill Canal north to its intersection with an unnamed branch; thence follow the meanderings of the unnamed branch in a northerly direction to its intersection with an electric power line; thence follow the electric power line in a general southeast direction to its intersection with West Hickory Street; thence West Hickory Street northeast to its intersection with West Causeway Approach also the point of beginning.

*Precinct 922.* Commence at the intersection of I-10 and the No. 6 Canal, also the point of beginning; thence follow the No. 6 Canal southeast, northeast, and southeast to its intersection with Salt Bayou; thence follow Salt Bayou south and southwest to its intersection where Salt Bayou flows into Lake Pontchartrain; thence follow a straight line extension south to the St. Tammany Parish/Orleans Parish boundary line; thence follow the St. Tammany Parish/Orleans Parish boundary line northeast to its intersection with a straight line extension leading to the intersection of Lake Pontchartrain and an extension of the W-14 canal; thence follow the W-14 canal north, northeast, and northwest to its intersection with the levee which encircles the new Kingspoint Subdivision; thence follow the levee south, west, north, and northeast to its intersection with Kingspoint Blvd.; thence follow Kingspoint Blvd. north and northeast to its intersection with the W-14 canal.; thence follow the W-14 canal northwest to its intersection with I-10; thence follow I-10 southwest to its intersection with the No. 6 Canal, also the point of beginning.

**Amend Ordinance Council Series No. 19-4200 and Sec. 2-39 - Precinct Descriptions, to provide with respect to the following precincts to provide for more accurate written descriptions of various precinct boundaries to conform to the maps attached as exhibits to Ordinance Council Series No. 19-4200:**

*Precinct F01.* Commence at the intersection of Highway 40 (Uneedus Road) and Anthony Road, also the point of beginning; thence follow Anthony Road north to its intersection with Lee Settlement Road; thence follow Lee Settlement Road east to its intersection with Hay Hollow Road; thence follow Hay Hollow Road northwest, north, east, north, east, north, and northeast to its intersection with Highway 25; thence follow Highway 25 southeast to its intersection with Josephs Road; thence follow Josephs Road northeast to its intersection with the Bogue Falaya River; thence follow the Bogue Falaya River in a general southeast direction to its intersection with Morgan Branch; thence follow Morgan Branch west, southwest, northwest, west, southwest, northwest, and north to its intersection with Highway 40 (Uneedus Road); thence follow Highway 40 (Uneedus Road) southwest and west to its intersection with Anthony Road, also the point of beginning.

*Precinct MD1.* Commence at the intersection of the Tchefuncte River and Bayou De Zaire, also the point of beginning; thence follow Bayou De Zaire north, northwest, and west to its intersection with Highway 21; thence follow Highway 21 north and northeast to its intersection with Dummy Line Road; thence follow Dummy Line Road northwest to its intersection with Black River; thence follow Black River south, southwest, south, southeast and south to its intersection with the shore line of Lake Pontchartrain; thence follow the shore line of Lake Pontchartrain west, northwest, west and southwest to its intersection with the St. Tammany Parish/Tangipahoa Parish boundary line; thence follow the St. Tammany Parish/Tangipahoa Parish boundary line into Lake Pontchartrain to its intersection with the St. Tammany Parish/Jefferson Parish boundary line; thence follow the St. Tammany Parish/Jefferson Parish boundary line southeast to its intersection with a straight line extension leading into the Tchefuncte River; thence follow the straight line extension north to its intersection with the Tchefuncte River; thence follow the Tchefuncte River northeast, north, northwest, and north to its intersection with Bayou De Zaire, also the point of beginning.

*Precinct M01.* Commence at the intersection of the Lake Pontchartrain Causeway and the St. Tammany Parish/Jefferson Parish boundary line in Lake Pontchartrain, also the point of beginning; thence follow the St. Tammany Parish/Jefferson Parish boundary line northwest to its intersection with a straight line extension leading to the intersection of the Tchefuncte River; thence follow the Tchefuncte River northeast and east to its intersection with an unnamed canal which runs parallel with the shoreline of Lake Pontchartrain; thence follow the canal southeast,



east, and southeast to its intersection with Bayou Chinchuba; thence follow Bayou Chinchuba northeast to its intersection with N. Causeway Blvd; thence follow N. Causeway Blvd south to its intersection with the Lake Pontchartrain Causeway; thence follow the Lake Pontchartrain Causeway to its intersection with the St. Tammany Parish/Jefferson Parish boundary line, also the point of beginning.

*Precinct M03.* Commence at the intersection of North Causeway Boulevard and Monroe Street in the City of Mandeville, also the point of beginning; thence follow Monroe Street southeast to its intersection with Wilkinson Street; thence follow Wilkinson Street southwest to its intersection with Lakeshore Drive; thence follow Lakeshore Drive northwest to its intersection where Lakeshore Drive meets Lake Pontchartrain east of Sunset Point Park; thence follow a straight line extension into Lake Pontchartrain to its intersection with the St. Tammany Parish/Orleans Parish boundary line; thence follow the St. Tammany Parish/Orleans Parish boundary line northwest to its intersection with the St. Tammany Parish/Jefferson Parish boundary line; thence follow the St. Tammany Parish/Jefferson Parish boundary line continuing northwest to its intersection with the Lake Pontchartrain Causeway; thence follow the Lake Pontchartrain Causeway northeast becoming North Causeway Boulevard to its intersection with Monroe Street, also the point of beginning.

*Precinct M05.* Commence at the intersection of Gerard Street and East Florida Street in the City of Mandeville, also the point of beginning; thence follow East Florida Street southeast to its intersection with Atalin Street; thence follow Atalin Street southwest to its intersection with a canal leading into Bayou Castine; thence follow the canal east and south to its intersection with Bayou Castine; thence follow Bayou Castine southwest to its intersection where Bayou Castine flows into Lake Pontchartrain; thence follow a straight line extension into Lake Pontchartrain south to its intersection with the St. Tammany Parish/Orleans Parish boundary line; thence follow the St. Tammany Parish/Orleans Parish boundary line northwest to its intersection with a straight line extension leading to a point east of Sunset Point Park; thence follow the straight line extension north to its intersection with the shoreline of Lake Pontchartrain; thence follow the shoreline of Lake Pontchartrain southeast to its intersection with Little Bayou Castine; thence follow Little Bayou Castine north to its intersection with Lakeshore Drive; thence follow Lakeshore Drive northwest to its intersection with Gerard Street; thence follow Gerard Street northeast to its intersection with East Florida Street, also the point of beginning.

*Precinct M09.* Commence at the intersection of Florida Street (a.k.a. Highway 190) and Atalin Street, also the point of beginning; thence follow Atalin Street south to its intersection with Bayou Castine; thence follow the meanderings of Bayou Castine northeast to its intersection with a drainage canal; thence follow the drainage canal north and northwest to its intersection with Austerlitz St.; thence follow Austerlitz St. northwest to its intersection with Sault St.; thence follow Sault St. southwest to its intersection of Florida Street (a.k.a. Highway 190); thence follow Florida Street (a.k.a. Highway 190) northwest to its intersection with Atalin Street, also the point of beginning.<sup>2</sup>

*Precinct M10.* Commence at the intersection of Austerlitz Street and Sault Street, also the point of beginning; thence follow Sault Street northeast to its intersection with Sycamore Place, thence follow Sycamore Place east and northeast to its intersection with Culver Ct., thence follow Culver Ct south to its intersection with the St Tammany Access Road, thence follow the St. Tammany Access Road east, north and east to its intersection with an electric power line; thence follow the electric power line south and east to its intersection with a pipeline, thence follow the pipeline southwest to its intersection with Bayou Castine, thence follow Bayou Castine southwest to its intersection with a drainage canal; thence follow the drainage canal north and northwest to its intersection with Austerlitz St, thence follow Austerlitz St northwest to its intersection with Sault St, also the point of beginning.

*Precinct M11.* Commence at the intersection of West Causeway Approach and Garden Avenue, also the point of beginning; thence follow Garden Avenue southwest to its intersection with Heavens Drive; thence follow Heavens Drive south and southeast to its intersection with

---

<sup>2</sup> This description confirms the boundaries of Precinct M09 in order to clarify the Council's intent in creating the boundaries of Precinct M10, such that there are no changes to the present boundaries and more accurate descriptions of the boundaries are being provided.

Dorado Dr; thence follow Dorado Dr west to its intersection with retention pond service road; thence follow service road south to its intersection with an electric power line; thence follow the electric power line east, south and southeast to its intersection with W Hickory Street; thence follow W Hickory Street northeast to its intersection with West Causeway Approach Highway; thence follow West Causeway Approach Highway northwest to its intersection with Garden Avenue, also the point of beginning.

*Precinct M12.* Commence at the intersection of West Hickory Street and West Causeway Approach, also the point of beginning; thence follow West Causeway Approach southeast to its intersection with Bayou Chinchuba; thence follow the meanderings of the Bayou Chinchuba in a southwest direction to its intersection with the Lake Pontchartrain shoreline; thence follow the Lake Pontchartrain shoreline in a westerly direction to its intersection with Sawmill Canal; thence follow the meanderings of the Sawmill Canal north to its intersection with an unnamed branch; thence follow the meanderings of the unnamed branch in a northerly direction to its intersection with an electric power line; thence follow the electric power line in a general southeast direction to its intersection with West Hickory Street; thence West Hickory Street northeast to its intersection with West Causeway Approach also the point of beginning.

*Precinct S18.* Commence at the intersection of Bayou Bonfouca and Bayou Lasseigne, also the point of beginning; thence follow Bayou Lasseigne southeast to its intersection with the west tracks of the Norfolk Southern Rail Road; thence follow the west tracks of the Norfolk Southern Rail Road southwest and southeast to its intersection with the Norfolk Southern Rail Road; thence follow the Norfolk Southern Rail Road continuing southwest to its intersection with an electrical transmission line; thence follow electrical transmission line southeast to its intersection with Pontchartrain Drive (Highway 11); thence follow Pontchartrain Drive (Highway 11) southwest to its intersection with the St. Tammany Parish/Orleans Parish boundary line in Lake Pontchartrain; thence follow the St. Tammany Parish/Orleans Parish boundary line northwest and west to its intersection with a straight line extension from the point where Bayou Liberty flows into Lake Pontchartrain; thence follow the straight line extension north to its intersection with Bayou Liberty; thence follow the meanderings of Bayou Liberty northeast to its intersection with Thompson Rd.; thence follow Thompson Rd. southeast to its intersection with Bayou Liberty Rd.; thence follow Bayou Liberty Rd. northeast to its intersection with Nunez Rd.; thence follow Nunez Rd. south to its intersection with Laurent Rd.; thence follow Laurent Rd. northeast to its intersection with Baldwin Dr.; thence follow Baldwin Dr. southeast to its intersection with Ridgewood Dr.; thence follow Ridgewood Dr. southwest to its intersection with Dunbar Dr.; thence follow Dunbar Drive southeast to its intersection with a gravel driveway into the property address of 57233 Dunbar Rd; thence follow the gravel driveway continuing southeast, then east, southeast, and south to its intersection with a cleared path leading to a boat launch on the property leading into Bayou Bonfouca; thence follow the cleared path southeast and southwest to its intersection with a boat launch leading into Bayou Bonfouca; thence follow the boat launch south to its intersection with Bayou Bonfouca; thence follow Bayou Bonfouca southeast and northeast to its intersection with Bayou Lasseigne, also the point of beginning.

*Precinct S21.* Commence at the intersection of Highway 190 East and Brookter Road, also the point of beginning; thence follow Brookter Road south and southeast to its intersection with Kingspoint Blvd.; thence follow Kingspoint Blvd. southwest to its intersection with the W-14 Canal; thence follow the W-14 Canal continuing northwest, then southwest, west, northwest, north, northwest, north, and northeast to its intersection with Fremaux Avenue; thence follow Fremaux Avenue east crossing over I-10 and becoming Highway 190 East; thence follow Highway 190 East continuing east, then southeast to its intersection with Brookter Road, also the point of beginning.

*Precinct S22.* Commence at the intersection of Landmark Drive and Oak Harbor Blvd., also the point of beginning; thence follow Oak Harbor Blvd., north, east, northeast, west, and northwest to its intersection with Highway 11; thence follow Highway 11 northeast to its intersection with Schneider Canal; thence follow Schneider Canal east, southeast, east, and southeast to its intersection with West Howze Beach Road; thence follow West Howze Beach Road northeast to its intersection with Highway 433 (Old Spanish Trail); thence follow Highway 433 (Old Spanish Trail) northwest to its intersection with East Terrance Avenue; thence follow East Terrance Avenue to Terrance Avenue northeast and north to its intersection with Ash Street;

thence follow Ash Street west to its intersection with 10th Street; thence follow 10th Street north to its intersection with Daney Street; thence follow Daney Street east to its intersection with the W-14 Canal; thence follow the meanderings of the W-14 Canal southeast, east, and northeast to its intersection with I-10; thence follow I-10 southwest to its intersection with the Oak Harbor Blvd. bridge; thence follow Oak Harbor Blvd. northwest to the intersection of Landmark Drive; also the point of beginning.

*Precinct 201.* Commence at the intersection of the St. Tammany Parish/Washington Parish boundary line and the Tchefuncte River, which is also the St. Tammany Parish/Tangipahoa Parish boundary line, also the point of beginning; thence follow the Tchefuncte River south, southeast, south, southeast, south, southwest, southeast, and south to its intersection with Highway 40 (Uneedus Road); thence follow Highway 40 (Uneedus Road) southeast and south to its intersection with Anthony Road; thence follow Anthony Road north to its intersection with Lee Settlement Road; thence follow Lee Settlement Road east to its intersection with Hay Hollow Road; thence follow Hay Hollow Road northwest, north, east, north, east, north, and northeast to its intersection with Highway 25; thence follow Highway 25 southeast to its intersection with Josephs Road; thence follow Josephs Road east to its intersection with the Bogue Falaya River; thence follow the Bogue Falaya River southeast, south, and southwest to its intersection with Highway 40 (Bush-Folsom Road); thence follow Highway 40 (Bush-Folsom Road) east to its intersection with Highway 1080 (aka Factory Rd.); thence follow Highway 1080 (aka Factory Rd.) north, east and north to its intersection with Highway 437; thence follow Highway 437 north to its intersection with the St. Tammany Parish/Washington Parish boundary line; thence follow said line northwest to its intersection with the St. Tammany Parish/Tangipahoa Parish boundary line and the Tchefuncte River, also the point of beginning.

*Precinct 202.* Commence at the intersection of Highway 40 (Uneedus Road) and the Tchefuncte River, which is also the St. Tammany Parish/Tangipahoa Parish boundary line, also the point of beginning; thence follow the Tchefuncte River south, southwest, east, south, southeast, southwest, east, south, southwest, and southeast to its intersection with Highway 1077 and Highway 1078 (Bennett Bridge Road); thence follow Highway 1077 and Highway 1078 (Bennett Bridge Road) northeast, east, and southeast to its intersection with Highway 1077 (Savannah Road); thence follow Highway 1077 (Savannah Road) northeast to its intersection with Highway 1077 (Willie Road); thence follow Highway 1077 (Willie Road) southeast, east, southeast, and east to its intersection with Highway 25; thence follow Highway 25 southeast to its intersection with Million Dollar Road; thence follow Million Dollar Road east to its intersection with the Bogue Falaya River; thence follow the Bogue Falaya River northeast, north, northwest, north, northeast, and north to its intersection with Morgan Branch; thence follow Morgan Branch west, southwest, northwest, west, southwest, northwest, and north to its intersection with Highway 40 (Uneedus Road); thence follow Highway 40 (Uneedus Road) southwest, west, and north to its intersection with the Tchefuncte River, which is also the St. Tammany Parish/Tangipahoa Parish boundary line, also the point of beginning.

*Precinct 204.* Commence at the intersection of Highway 1080 (North Factory Road) and Highway 437 (Middle Road), also the point of beginning; thence follow Highway 437 (Middle Road) southwest, southeast, south, southwest, south, and southeast to its intersection with Bill's Creek; thence follow the meanderings of Bill's Creek southwest, west, southwest, south, southwest, south, southwest, and southeast to its intersection with Simalusa Creek; thence follow the meanderings of Simalusa Creek south and southwest to its intersection with the Bogue Falaya River; thence follow the meanderings of the Bogue Falaya River northwest, north, northwest, north, and northeast to its intersection with Highway 40; thence follow Highway 40 east to its intersection with Highway 1080 (North Factory Road); thence follow Highway 1080 (North Factory Road) north, northeast, east, north, and northeast to its intersection with Highway 437 (Middle Road), also the point of beginning.

*Precinct 401.* Commence at the intersection of Highway 22 and the Tchefuncte River, also the point of beginning; thence follow the meanderings of the Tchefuncte River south, southwest, and south to its intersection with an unnamed canal which runs parallel with the shoreline of Lake Pontchartrain; thence follow the unnamed canal southeast, east, and southeast to its intersection with Sawmill Canal; thence follow Sawmill Canal northeast, east and northeast

to its intersection with an unnamed creek; thence follow the unnamed creek northwest, north and northwest to its intersection with an electric power line that runs to the northwest and southeast; thence follow the electric power line southeast to its intersection with an electric power line that runs to the north; thence follow the north bound electric power line north approximately 570', thence continue northwest along said power line approximately 890' to a point approximately 230' east of Woodridge Boulevard, thence follow the power line as it runs parallel to Woodridge Boulevard approximately 4,000' to its intersection with Highway 22; thence follow Highway 22 west, southwest and west to its intersection with the Tchefuncte River, also the point of beginning.

*Precinct 409.* Commence at the intersection of Highway 1088 and I-12, also the point of beginning; thence follow I-12 southeast to its intersection with a pipeline; thence follow the pipeline southwest to its intersection with Bayou Castine; thence follow Bayou Castine southwest to its intersection with the Lake Pontchartrain Shoreline; thence follow a straight line extension to the St. Tammany Parish/Orleans Parish boundary line; thence follow the St. Tammany Parish/Orleans Parish boundary line east and northeast to its intersection with a straight line extension leading to the intersection of Cane Bayou with the Lake Pontchartrain Shoreline; thence follow Cane Bayou north and northeast to its intersection with Highway 190; thence follow Highway 190 southeast to its intersection with North Pontchartrain Drive; thence follow North Pontchartrain Drive north, northeast, east, and southeast to its intersection with Fish Hatchery Road; thence follow Fish Hatchery Road northeast, northwest, north, northeast, and north to its intersection with Beaver Ball Road; thence follow Beaver Ball Road northeast, north, northwest, north, and northwest to its intersection with Highway 1088; thence follow Highway 1088 southwest, west, and southwest to its intersection with I-12, also the point of beginning.

*Precinct 412.* Commence at the intersection of Highway 1088 and I-12, also the point of beginning; thence follow Highway 1088 southwest to its intersection with Trinity Dr; thence follow Trinity Dr south to its intersection with Olvey Dr.; thence follow Olvey Dr. northeast and south to its intersection with Sycamore Place; thence follow Sycamore Place east, south and southeast to its intersection with Culver Ct; thence follow Culver Ct south to its intersection with the St Tammany Access Road, thence follow the St. Tammany Access Road east, north and east to its intersection with an electric power line; thence follow the electric power line south and east to its intersection with a pipeline; thence follow the pipeline northeast to its intersection with I-12; thence follow I-12 northwest to its intersection with Highway 1088, also the point of beginning.

*Precinct 421.* Commence at the intersection of Highway 22 and Heavens Drive, also the point of beginning, thence follow Heavens Drive south and southeast to its intersection with Dorado Dr; thence follow Dorado Dr west to its intersection with retention pond service road; thence follow service road south to its intersection with an electric power line; thence follow the electric power line west and southwest; thence continue northwest along said power line approximately 840' to its intersection with an electric power line that runs to the north; thence follow the north bound electric power line north approximately 570', thence continue northwest along said power line approximately 890' to a point approximately 230' east of Woodridge Boulevard, thence follow the power line as it runs parallel to Woodridge Boulevard approximately 4,000' to its intersection with Highway 22; thence follow Highway 22 southeast to its intersection with Heavens Drive, also the point of beginning.

*Precinct 703.* Commence at the intersection of Highway 190 and Bayou Lacombe, also the point of beginning; thence follow the meanderings of Bayou Lacombe southeast and south to its intersection where Bayou Lacombe flows into Lake Pontchartrain; thence follow a straight line extension south to its intersection with the St. Tammany Parish/Orleans Parish boundary line in Lake Pontchartrain; thence follow the St. Tammany Parish/Orleans Parish boundary line southwest to its intersection with a straight line extension leading to Cane Bayou; thence follow the straight line extension north to its intersection with Cane Bayou; thence follow Cane Bayou continuing north, then northeast to its intersection with Highway 190; thence follow Highway 190 southeast and northeast to its intersection with Bayou Lacombe, also the point of beginning.

*Precinct 704.* Commence at the intersection of Highway 190 and Bayou Lacombe, also the point of beginning; thence follow the meanderings of Bayou Lacombe southeast and south to

its intersection where Bayou Lacombe flows into Lake Pontchartrain; thence follow the shore line of Lake Pontchartrain east and southeast to its intersection with a pipeline leading into Lake Pontchartrain; thence follow the pipeline northeast to its intersection with Bayou Paquet Road; thence follow Bayou Paquet Road east and southeast to its intersection with Transmitter Road; thence follow Transmitter Road north to its intersection with Highway 190; thence follow Highway 190 west, northwest, and southwest to its intersection with Bayou Lacombe, also the point of beginning.

*Precinct 705.* Commence at the intersection of Transmitter Road and the Tammany Trace, also the point of beginning; thence follow the Tammany Trace east to its intersection with Park Avenue; thence follow Park Avenue south and southwest to its intersection with Bayou Paquet; thence follow Bayou Paquet southeast and south to its intersection with Bayou Paquet Road; thence follow Bayou Paquet Road southeast to its intersection with Thompson Road; thence follow Thompson Road southwest and southeast to its intersection with Bayou Liberty; thence follow the meanderings of Bayou Liberty southwest to its intersection where Bayou Liberty flows into Lake Pontchartrain; thence follow a straight line extension south to its intersection with the St. Tammany Parish/Orleans Parish boundary line in Lake Pontchartrain; thence follow the St. Tammany Parish/Orleans Parish boundary line west and southwest to its intersection with a straight line extension leading to Bayou Lacombe; thence follow the straight line extension north to its intersection where Bayou Lacombe meets the shoreline of Lake Pontchartrain; thence follow the shoreline of Lake Pontchartrain east and southeast to its intersection with a pipeline leading into Lake Pontchartrain; thence follow the pipeline northeast to its intersection with Bayou Paquet Road; thence follow Bayou Paquet Road east and southeast to its intersection with Transmitter Road; thence follow Transmitter Road north to its intersection with the Tammany Trace, also the point of beginning.

*Precinct 909.* Commence at the intersection of the St. Tammany Parish/Orleans Parish boundary line in Lake Pontchartrain and I-10, also the point of beginning; thence follow I-10 northeast to its intersection with the No. 6 canal; thence follow the No. 6 Canal southeast, northeast, and southeast to its intersection with Salt Bayou; thence follow Salt Bayou south, and southwest to its intersection where Salt Bayou flows into Lake Pontchartrain; thence follow a straight line extension south to the St. Tammany Parish/Orleans Parish boundary line; thence follow the St. Tammany Parish/Orleans Parish boundary line into Lake Pontchartrain to its intersection with I-10, also the point of beginning.

*Precinct 910.* Commence at the intersection of Clipper Drive and Eden Isles Drive, also the point of beginning; thence follow Eden Isles Drive southeast to its intersection with Marina Drive; thence follow Marina Drive southeast to its intersection with Landmark Drive; thence follow Landmark Drive east to its intersection with Oak Harbor Blvd.; thence follow Oak Harbor Blvd. southeast to its intersection with I-10; thence follow I-10 southwest to its intersection with the shoreline of Lake Pontchartrain; thence follow the shoreline of Lake Pontchartrain northwest to its intersection with the mouth of Oak Harbor Pass; thence follow Oak Harbor Pass northwest, northeast, and northwest to its intersection with Middle Canal; thence follow Middle Canal northwest to its intersection with Blackfin Canal; thence follow Blackfin Canal northeast to its intersection with Eden Isles Canal S, thence follow Eden Isles Canal S northwest to its intersection with the bridge on Clipper Dr.; thence follow Clipper Dr. northeast to its intersection with Eden Isles Drive, also the point of beginning.

*Precinct 911.* Commence at the intersection of Highway 11 and the St. Tammany Parish/Orleans Parish boundary line in Lake Pontchartrain, also the point of beginning; thence follow the St. Tammany Parish/Orleans Parish boundary line east and southeast to its intersection with I-10; thence follow I-10 northeast to its intersection with the shoreline of Lake Pontchartrain; thence follow the shoreline of Lake Pontchartrain northwest to its intersection with the mouth of Oak Harbor Pass; thence follow Oak Harbor Pass northwest, northeast, and northwest to its intersection with Middle Canal; thence follow Middle Canal northwest to its intersection with Blackfin Canal; thence follow Blackfin Canal northeast to its intersection with Eden Isles Canal S; thence follow Eden Isles Canal S northwest to its intersection with the bridge on Clipper Dr.; thence follow Clipper Dr. northeast to its intersection with Eden Isles Drive; thence follow Eden Isles Drive northwest to its intersection with Highway 11; thence follow Highway 11 southwest to its intersection with the St. Tammany Parish/Orleans Parish boundary

line in Lake Pontchartrain, also the point of beginning.

*Precinct 912.* Commence at the intersection of Bayou Bonfouca and Bayou Liberty Road, also the point of beginning; thence follow Bayou Liberty Road northwest, west, and southwest to its intersection with Napoleon Avenue; thence follow Napoleon Avenue southeast to its intersection with Benjamin Road; thence follow Benjamin Road southwest and southeast to its intersection with Laurent Road; thence follow Laurent Road southwest, northwest, and southwest to its intersection with Baldwin Drive; thence follow Baldwin Drive southeast to its intersection with Ridgewood Drive; thence follow Ridgewood Drive southwest to its intersection with Dunbar Drive; thence follow Dunbar Drive southeast to its intersection with a gravel driveway into the property address of 57233 Dunbar Rd; thence follow the gravel driveway continuing southeast, then east, southeast, and south to its intersection with a cleared path leading to a boat launch on the property leading into Bayou Bonfouca; thence follow the cleared path southeast and southwest to its intersection with a boat launch leading into Bayou Bonfouca; thence follow the boat launch south to its intersection with Bayou Bonfouca; thence follow Bayou Bonfouca east, northeast, north, northeast, southeast, and northeast to its intersection with Bayou Liberty Road, also the point of beginning.

*Precinct 918.* Commence at the intersection of Highway 190 Business (Shortcut Highway) and Doubloon Branch, also the point of beginning; thence follow the meanderings of Doubloon Branch south, southeast, southwest, west, northwest, south, southeast, west, and southwest to its intersection with the W-14 canal; thence follow the W-14 canal southeast, southwest, and south to an extension of the W-14 canal; thence follow the extension of the W-14 canal to its intersection where the extension of the W-14 canal flows into Lake Pontchartrain; thence follow a straight line extension south to the St. Tammany Parish/Orleans Parish boundary line; thence follow the St. Tammany Parish/Orleans Parish boundary line southeast, east, northeast, east, southeast, northeast, and southeast to its intersection with the St. Tammany Parish/St. Bernard Parish boundary line; thence follow the St. Tammany Parish/St. Bernard Parish boundary line continuing southeast then east and northeast through Lake Borgne to its intersection with the St. Tammany Parish boundary line at the Louisiana/Mississippi border; thence follow the Louisiana/Mississippi border west and northwest to the mouth of the Pearl River; thence follow the meanderings of the Pearl River northwest, west, southwest, west, northwest, and north to its intersection with Highway 90; thence follow Highway 90 west and southwest to its intersection with Highway 190 Business (Shortcut Highway); thence follow Highway 190 Business (Shortcut Highway) west and northwest to its intersection with Doubloon Branch, also the point of beginning.

*Precinct 922.* Commence at the intersection of I-10 and the No. 6 Canal, also the point of beginning; thence follow the No. 6 Canal southeast, northeast, and southeast to its intersection with Salt Bayou; thence follow Salt Bayou south and southwest to its intersection where Salt Bayou flows into Lake Pontchartrain; thence follow a straight line extension south to the St. Tammany Parish/Orleans Parish boundary line; thence follow the St. Tammany Parish/Orleans Parish boundary line northeast to its intersection with a straight line extension leading to the intersection of Lake Pontchartrain and an extension of the W-14 canal; thence follow the W-14 canal north, northeast, and northwest to its intersection with the levee which encircles the new Kingspoint Subdivision; thence follow the levee south, west, north, and northeast to its intersection with Kingspoint Blvd.; thence follow Kingspoint Blvd. north and northeast to its intersection with the W-14 canal.; thence follow the W-14 canal northwest to its intersection with I-10; thence follow I-10 southwest to its intersection with the No. 6 Canal, also the point of beginning.

BE IT FURTHER ORDAINED that pursuant to Louisiana Revised Statute 18:533, the polling location of Precinct M12 shall be designated as Pontchartrain Elementary School, located at 1500 West Causeway Approach, Mandeville, Louisiana 70471.

BE IT FURTHER ORDAINED that Section 2-41 of the St. Tammany Parish Code of Ordinances be amended to apportion the above-described Precincts M11, M12, and 922 to the appropriate Council Districts as follows:

**Amend Sec. 2-41 to provide in pertinent part:**

(4) District 4 consists of precincts 102, 401, 402, 404, 413, 418, 419, 421, M01, M06, ~~and MD1, M11, and M12.~~

(13) District 13 consists of precincts 806, 810, 811, 813, 816, 908, 909, 910, 911, 918, 922, and S18.

**REPEAL:** All ordinances or parts of Ordinances in conflict herewith are hereby repealed.

**SEVERABILITY:** If any provision of this Ordinance shall be held to be invalid, such invalidity shall not affect other provisions herein which can be given effect without the invalid provision and to this end the provisions of this Ordinance are hereby declared to be severable.

**EFFECTIVE DATE:** This Ordinance shall become effective upon signature of the Council Chairman and Parish President.

MOVED FOR ADOPTION BY: \_\_\_\_\_, SECONDED BY: \_\_\_\_\_

WHEREUPON THIS ORDINANCE WAS SUBMITTED TO A VOTE AND RESULTED IN THE FOLLOWING:

YEAS:

NAYS:

ABSTAIN:

ABSENT:

THIS ORDINANCE WAS DECLARED DULY ADOPTED AT A REGULAR MEETING OF THE PARISH COUNCIL ON THE 8 DAY OF JULY, 2021; AND BECOMES ORDINANCE COUNCIL SERIES NO. \_\_\_\_\_.

\_\_\_\_\_  
MICHAEL LORINO JR., COUNCIL CHAIRMAN

ATTEST:

\_\_\_\_\_  
KATRINA L. BUCKLEY, COUNCIL CLERK

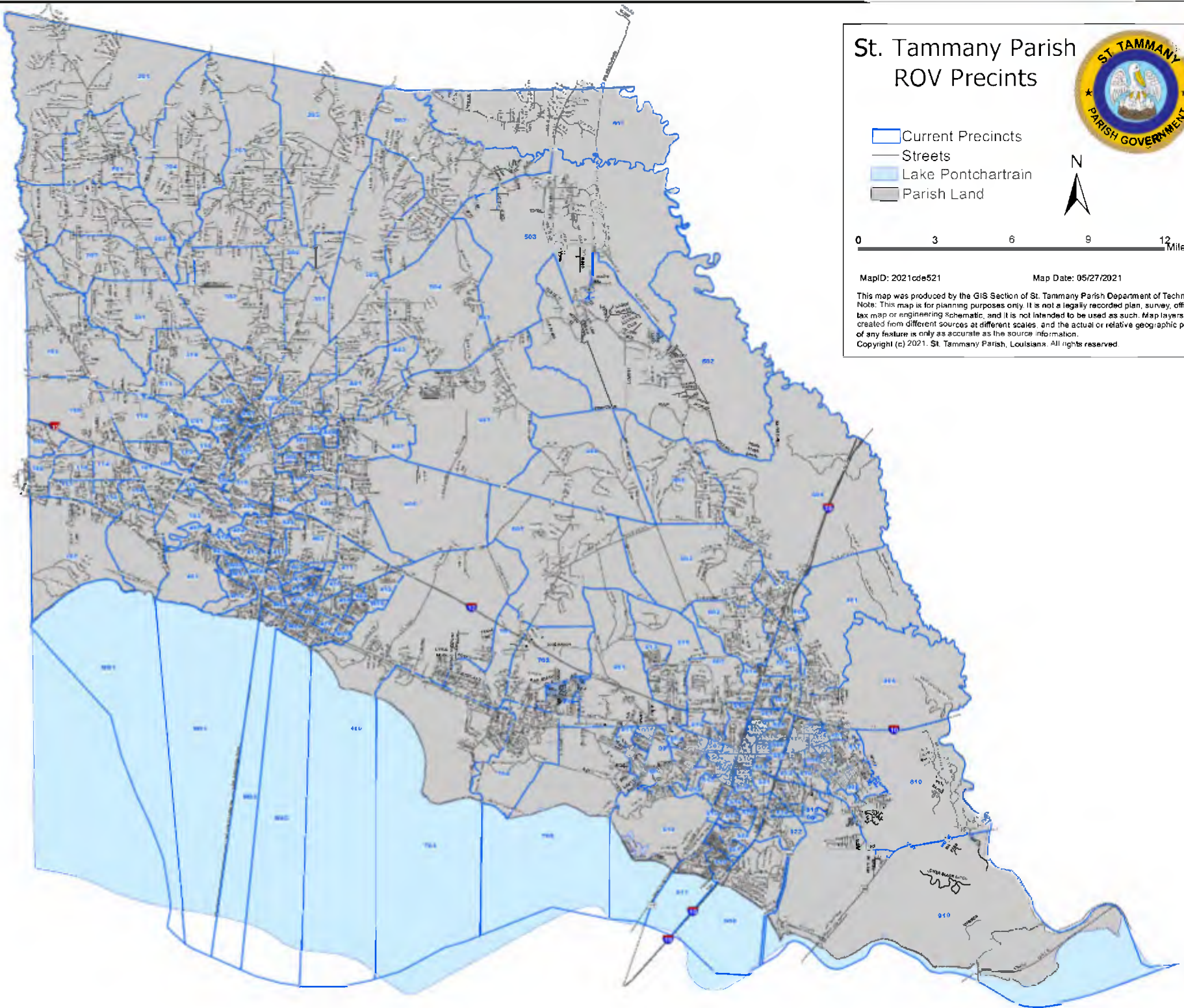
\_\_\_\_\_  
MICHAEL B. COOPER, PARISH PRESIDENT

Published Introduction: JUNE 30, 2021

Published Adoption: \_\_\_\_\_, 2021

Delivered to Parish President: \_\_\_\_\_, 2021 at \_\_\_\_\_

Returned to Council Clerk: \_\_\_\_\_, 2021 at \_\_\_\_\_



# St. Tammany Parish ROV Precincts



- Current Precincts
- Streets
- Lake Pontchartrain
- Parish Land

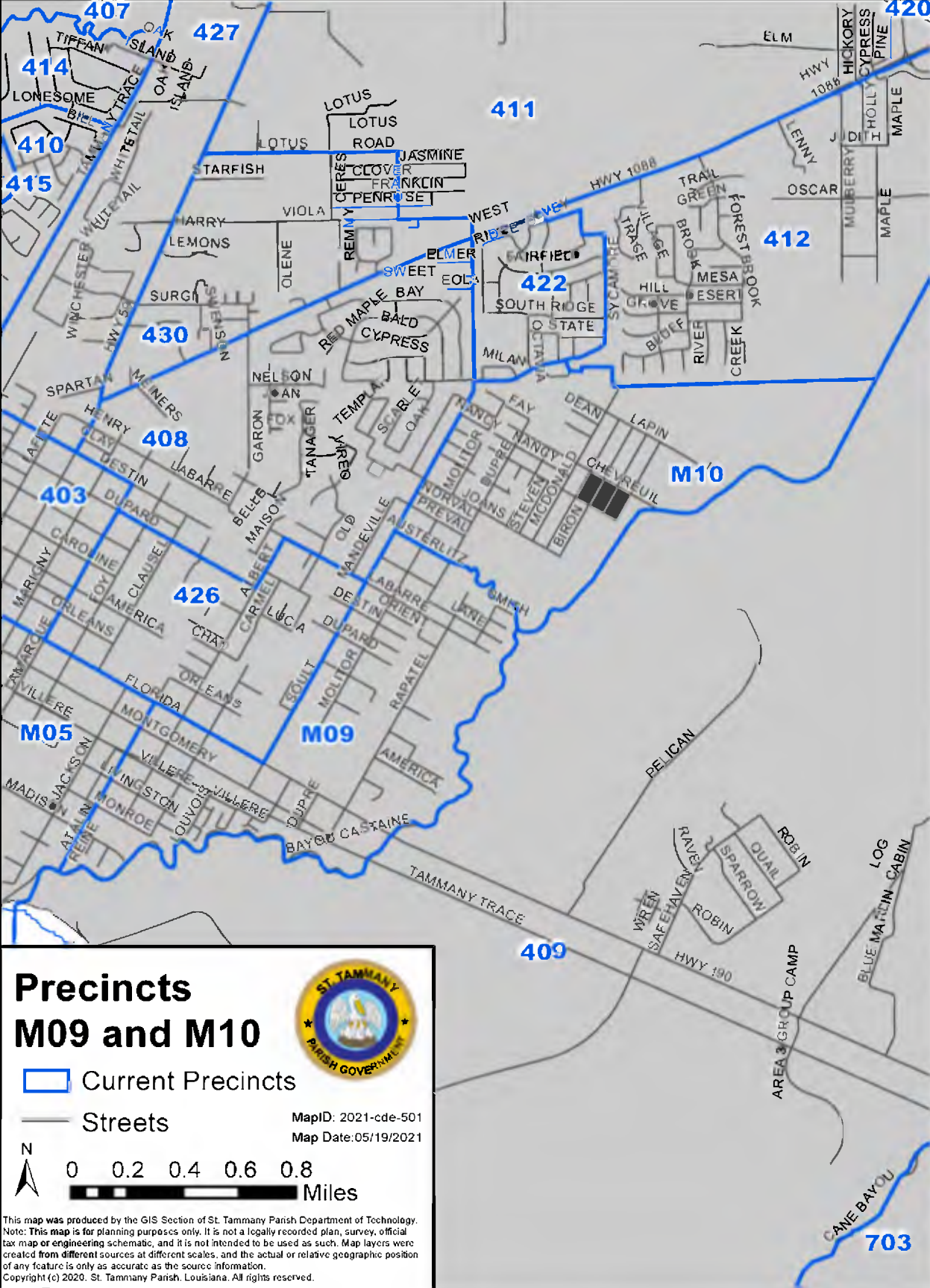


MapID: 2021cde521      Map Date: 05/27/2021

This map was produced by the GIS Section of St. Tammany Parish Department of Technology. Note: This map is for planning purposes only. It is not a legally recorded plan, survey, official tax map or engineering schematic, and it is not intended to be used as such. Map layers were created from different sources at different scales, and the actual or relative geographic position of any feature is only as accurate as the source information.

Copyright (c) 2021. St. Tammany Parish, Louisiana. All rights reserved



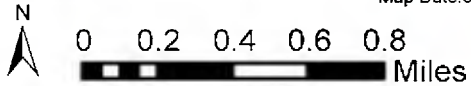


# Precincts M09 and M10



- Current Precincts
- Streets

MapID: 2021-cde-501  
Map Date: 05/19/2021



This map was produced by the GIS Section of St. Tammany Parish Department of Technology. Note: This map is for planning purposes only. It is not a legally recorded plan, survey, official tax map or engineering schematic, and it is not intended to be used as such. Map layers were created from different sources at different scales, and the actual or relative geographic position of any feature is only as accurate as the source information. Copyright (c) 2020. St. Tammany Parish, Louisiana. All rights reserved.